

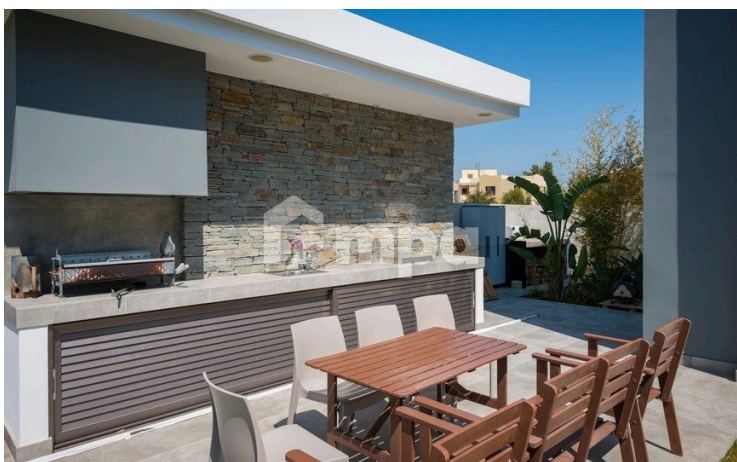
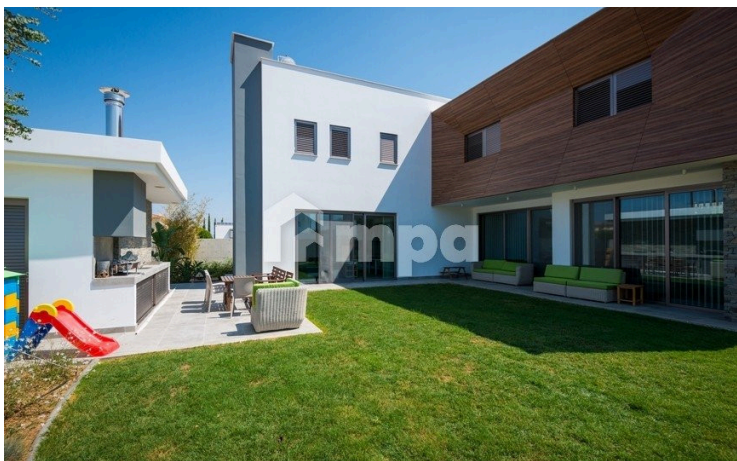
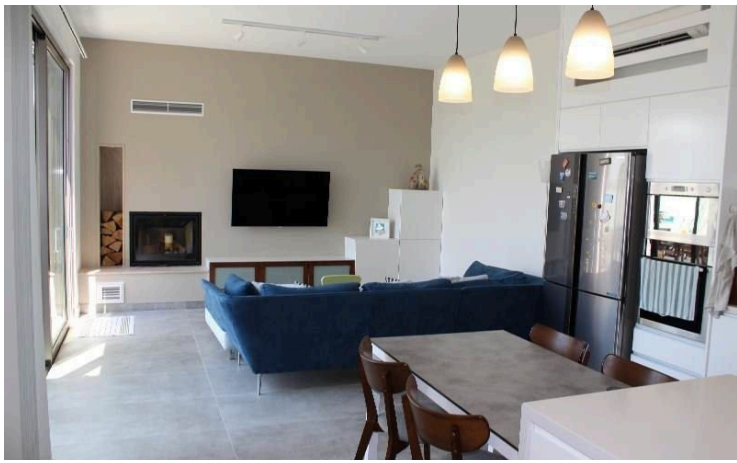
#38025

House in GSP Area For Rent

 Latsia, Nicosia

€3,500 /month





ΠΡΟΣΟΧΗ/ATTENTION

Πληροφορίες όπως τιμές ακινήτων και/ή διαθεσιμότητα ακινήτων που επισυνάπτονται στην ιστοσελίδα μας δεν είναι δεσμευτικές και δίνεται να

Overview

Specifications

Bedrooms

 4


Bathrooms

 3

Covered

 300 m²

Type	House
Showers	1
Toilets	4
Plot	600 m ²
Status	Used

Year of construction	2018
Furnished	Fully furnished
Structure	Concrete
Energy efficiency rating	 A

Description

A newly built, modern luxury house in one of Nicosia's most prestigious and convenient areas (GSP area), with easy access towards or outside Nicosia.

The property is 300 square meters in a 600 square meters plot. Therefore, it enjoys a great outdoor area with grass, trees, herbs, a shower, barbecue and storage space.

Indoors, on the ground floor, you find an extremely spacious living room with a dining area, the kitchen with an everyday sitting room, a storage room and WC. On the first floor, the main bedroom is completely separate with its own large walking closet and double shower. The other 2 bedrooms are comfortable and enjoy another common shower and WC. On this floor, you also find a maid's room/storage room, a laundry room, and an open office/playroom area.

The house has an elevator and photovoltaic system covering most of the electrical Bills.

Recently the 4th room was separated with a glass and can be use as an office or play area!!

It was built in 2018 according to the highest standards, with the finest materials and offers all amenities.

It's Energy Efficiency A due to exceptional thermo-soundproof, underfloor heating and the minimum consumption in electricity and water.

The house is rented fully furnished with completely new furniture.

Central vacuum cleaner system.



ΠΡΟΣΟΧΗ/ATTENTION

Πληροφορίες όπως τιμές ακινήτων και/ή διαθεσιμότητα ακινήτων που επισυνάπτονται στην ιστοσελίδα μας δεν είναι δεσμευτικές και δίνεται να

Additional information

Facilities

Aircondition, Split system

Landscaped garden

Parking, Covered

Elevator

Maid's room

Solar photovoltaic panels

Heating, Underfloor

Outdoor shower

Storage

Features

Barbeque

Easy access to main roads

Granite countertops

Indoor fireplace

Laundry room

Play room

Veranda, large

Double glazing

En suite shower

Guest WC

Irrigation system

Luxury specifications

Pressurized water system

Walk-in closet

Easy access to highway

Fly screens

Handicap accessible

Kitchen appliances

Near amenities

Roller blinds

Distances

Amenities

 2 km

Airport

 30 km

Sea

 30 km



ΠΡΟΣΟΧΗ/ATTENTION

Πληροφορίες όπως τιμές ακινήτων και/ή διαθεσιμότητα ακινήτων που επισυνάπτονται στην ιστοσελίδα μας δεν είναι δεσμευτικές και δίνεται να