

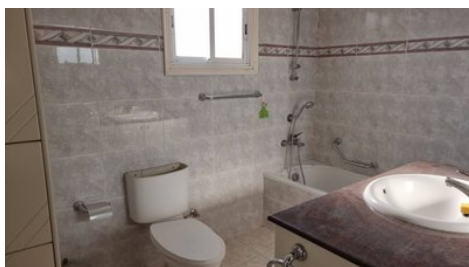
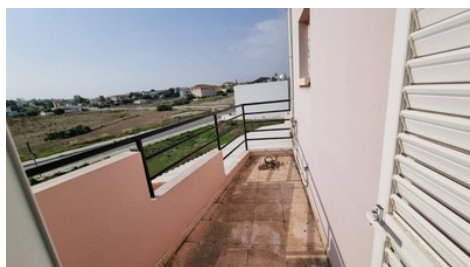
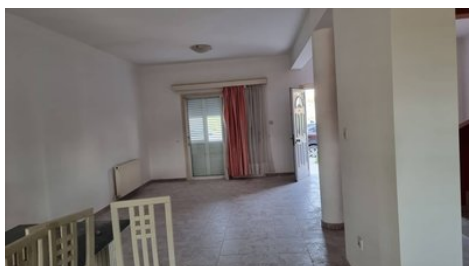


House In Ilioupoli For Sale

📍 Nicosia, Ilioupoli

#51003





ΠΡΟΣΟΧΗ/
ATTENTION

Πληροφορίες όπως τιμές ακινήτων και/ή διαθεσιμότητα ακινήτων που επισυνάπτονται στην ιστοσελίδα μας δεν είναι δεσμευτικές και δίνεται να τροποποιηθούν ανά πάσα στιγμή

Information such as prices and / or availability of properties shown to our website are not binding and are given to change at any time without

| | | | |
|-----------------------------|--------------------|---------------------------------|----------------------|
| Price | €270,000 | Type | House |
| Bedrooms | 3 | Bathrooms | 1 |
| Covered | 145 m ² | Covered veranda | 7 m ² |
| Uncovered veranda | 45 m ² | Covered parking | 19 m ² |
| Year of Construction | 1997 | Title deed | Yes |
| Status | Resale | Energy efficiency rating | Certificate expected |
| Floor | Ground floor / 1 | Area | Nicosia, Ilioupoli |

Description

A three-bedroom attached house in the Carolina Park area of Ilioupoli is for sale. The house is attached to another duplex house on the right side and consists of three bedrooms, the master with an en-suite shower and w.c, the main bathroom, and a balcony on the first floor. On the ground floor, there is a spacious sitting-dining room, a kitchen with granite countertops, and a guest W.C. On the front side there is an uncovered veranda and on the back side, a huge covered veranda with a pergola. The house also provides covered parking, Air conditioning units in all places, and oil central heating. Title deed available for fast transfer.

Facilities

Aircondition, Split system

Features

| | |
|---------------------------|------------------------|
| Bath | Shower |
| Easy access to main roads | Easy access to highway |
| Balcony, back | Balcony, front |
| Balcony | Internal stairs |
| City view | Ceramic tiles |
| Double glazing | Veranda, back |
| Veranda, large | Veranda |
| Granite countertops | En suite Shower |
| Near bus route | Near amenities |

Distances

| | | | |
|------------------|-------|----------------|-------|
| Amenities | 100 m | Schools | 300 m |
|------------------|-------|----------------|-------|