

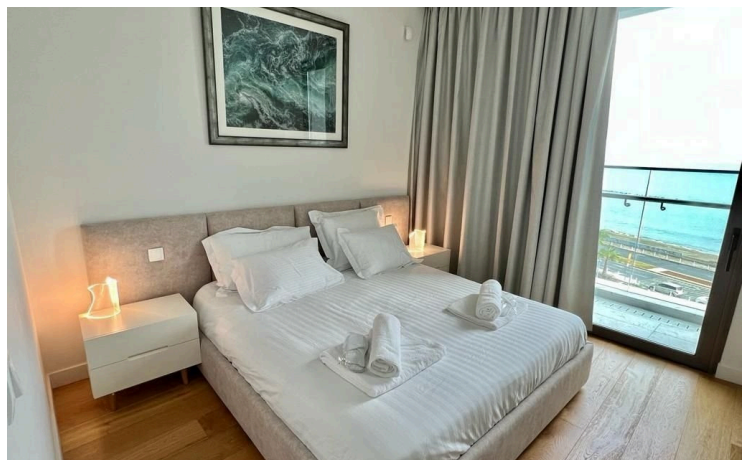
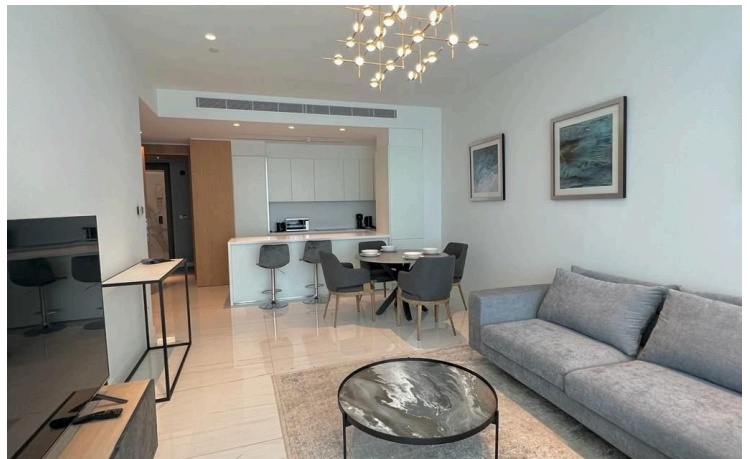
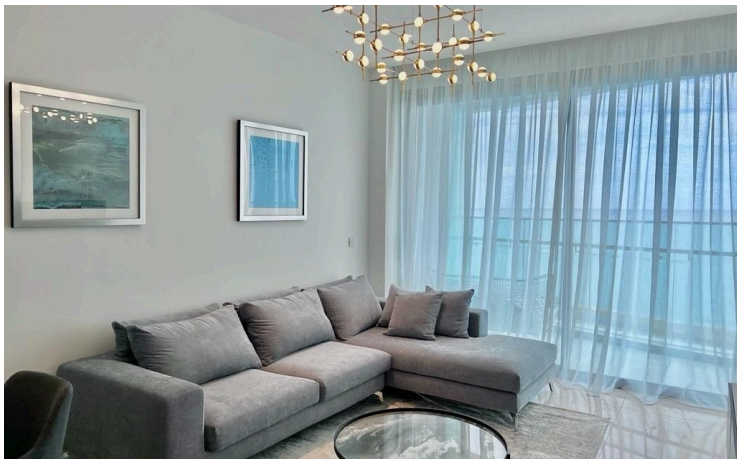
#53523

Luxury two bedrooms apartment with sea view in Potamos Germasigeias for sale

📍 Germasogia, Limassol

€6,500 /month





ΠΡΟΣΟΧΗ/ATTENTION

Πληροφορίες όπως τιμές ακινήτων και/ή διαθεσιμότητα ακινήτων που επισυνάπτονται στην ιστοσελίδα μας δεν είναι δεσμευτικές και δίνεται να

Overview

Specifications

Bedrooms

 2

Bathrooms

 2

Covered

 111 m²

Type

Apartment

Toilets

3

Status

Key ready

Year of construction

2022

Furnished

Fully furnished

Energy efficiency rating

 **A**

Description

Stunning 2 bedrooms apartment located in a high-rise beachfront complex in the premium coastal area of Limassol, Germasogeia district - the center of the tourist zone, with direct sea views. This luxury, bright and fully airconditioned apartment consists of an open plan spacious living, dining and fully equipped kitchen, a dining table for 4 and a comfortable seating area with a flat screen TV satellite and Wifi. The living area opens out to a spacious balcony that connects to 2 bedrooms with uninterrupted sea view at every angle. Each bedrooms consist of one extra large king size bed with wardrobe space and AC/Underfloor heating and direct access to balcony. A flat 50" TV and an en-suite bathroom are included in one of the bedrooms.

The complex is a multi-storey luxury residential and commercial project with an area of 34,000 m² on the main promenade of Limassol in the heart of the city. Apartment is distinguished by magnificent panoramic sea views, high ceilings, high-quality finishes, modern design, large verandas, smart home system. The entire infrastructure is located in the commercial part of the complex, including restaurants with original cuisine and branded stores. A 5-star 24/7 concierge service is provided for the residents of the complex, as well as sea facing outdoor pool, indoor pools, a fitness center, sauna, an underground parking and discreetly monitored gated access, ensuring you and your family can come and go with absolute peace of mind.

Year of construction: October 2022.



ΠΡΟΣΟΧΗ/ATTENTION

Πληροφορίες όπως τιμές ακινήτων και/ή διαθεσιμότητα ακινήτων που επισυνάπτονται στην ιστοσελίδα μας δεν είναι δεσμευτικές και δίνεται να

Additional information

Facilities

Aircondition, Split system

Gated complex

Indoor pool, Communal, heated

Spa

Childrens playground

Gym

Parking, Covered

Elevator

Heating, Underfloor

Pool, Communal

Features

24-hour security

Combined kitchen and dining area

Easy access to highway

En suite bathroom

Fitted wardrobes

Investment opportunity

Near amenities

Parquet flooring

Sea view

Spacious rooms

Veranda, large

Bath

Connected to electric mains

Easy access to main roads

Entrance gate

Guest WC

Kitchen appliances

Near bus route

Roller blinds

Shutters, electric

Tile flooring

Walking distance to beach

Bright

Double glazing

Elevated

Entrance gate, automated

Handicap accessible

Modern design

Panoramic view

Sea front

Sound insulation

Veranda, front

Distances

Airport



50 km

Sea



500 m



ΠΡΟΣΟΧΗ/ATTENTION

Πληροφορίες όπως τιμές ακινήτων και/ή διαθεσιμότητα ακινήτων που επισυνάπτονται στην ιστοσελίδα μας δεν είναι δεσμευτικές και δίνεται να