

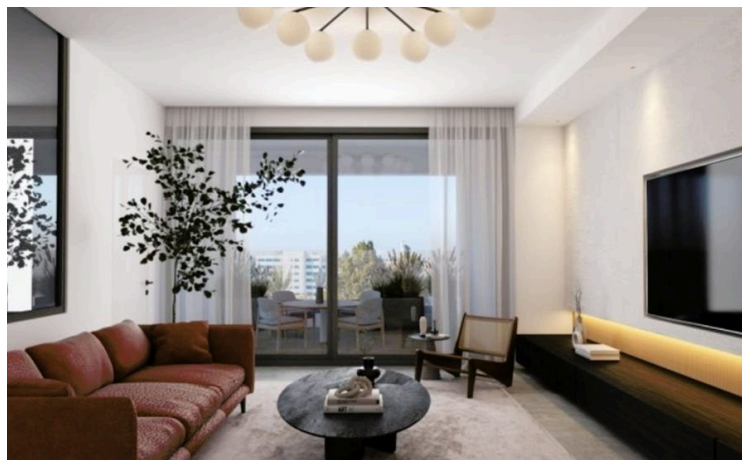
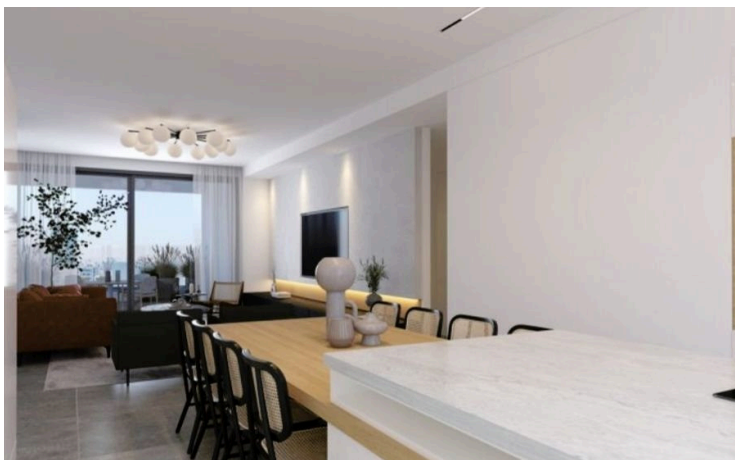
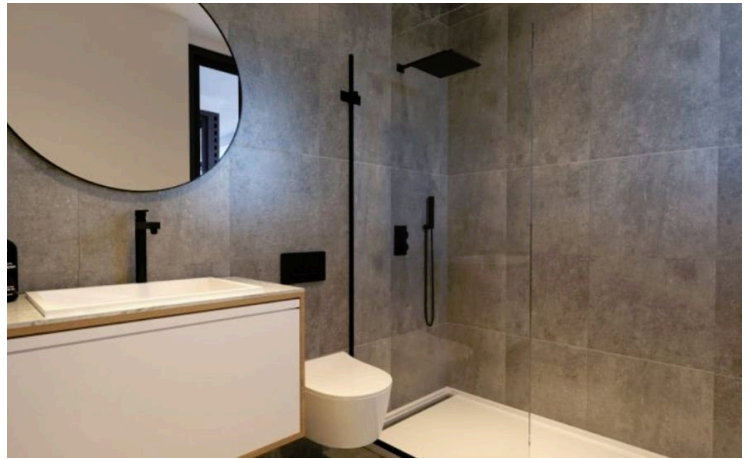
#57806

Two-bedroom apartment for sale in the Likavitos area

📍 Agios Antonios, Nicosia

€280,000 +VAT





ΠΡΟΣΟΧΗ/ATTENTION

Πληροφορίες όπως τιμές ακινήτων και/ή διαθεσιμότητα ακινήτων που επισυνάπτονται στην ιστοσελίδα μας δεν είναι δεσμευτικές και δίνεται να

Overview

Specifications

Bedrooms

 2

Bathrooms

 2

Covered

 88 m²

Type

Apartment

Toilets

2

Status

Under construction

Year of construction

2025

Energy efficiency rating

 **A**

Description

The 5-floor building consists of various types of apartments such as studios, singles, 2 & 3-bedroom apartments, and a penthouse on the top floor of the building. All apartments in the project have been designed to offer future owners a comfortable life in the city, anticipating their needs, but at the same time creating the warmth of an ideal apartment. The architectural firm has based the design of the building on simple and geometric lines, with clean forms and materials, paying special attention to ergonomics and the creation of comfortable spaces.

The impressive building can be an excellent choice for those looking for a new home, but also for those interested in a future worthwhile investment. Located in a quiet, residential area near the Landmark (former HILTON HOTEL).

- Energy class A building
- Photovoltaic building system
- Independent installed photovoltaic
- System for selected apartments
- Charger provisions for electric cars
- Safety bar in the parking area
- Installed air conditioning and
- Underfloor heating systems with heat
- Pump system in apartments 2 and 3 sub-rooms
- Large and spacious terraces
- Fire-resistant security doors
- Personalised kitchens, made-to-order
- European specifications



ΠΡΟΣΟΧΗ/ATTENTION

Πληροφορίες όπως τιμές ακινήτων και/ή διαθεσιμότητα ακινήτων που επισυνάπτονται στην ιστοσελίδα μας δεν είναι δεσμευτικές και δίνεται να

Additional information

Facilities

Aircondition, Split system

Parking, Covered

Elevator

Solar photovoltaic panels

Heating, Underfloor

Solar water heater

Features

Bright

Double glazing

Elevated

Handicap accessible

Near amenities

Pressurized water system

Shutters, electric

Veranda

CCTV

Easy access to highway

Entrance gate, automated

Heart of city center

Near bus route

Quiet area

Thermal insulation

Combined kitchen and dining area

Easy access to main roads

Fitted wardrobes

Investment opportunity

Next to green area

Rental potential

Under stairs storage

Distances

Amenities

 500 m

Airport

 45 km

Sea

 45 km

Public transport

 200 m

Schools

 500 m



ΠΡΟΣΟΧΗ/ATTENTION

Πληροφορίες όπως τιμές ακινήτων και/ή διαθεσιμότητα ακινήτων που επισυνάπτονται στην ιστοσελίδα μας δεν είναι δεσμευτικές και δίνεται να