

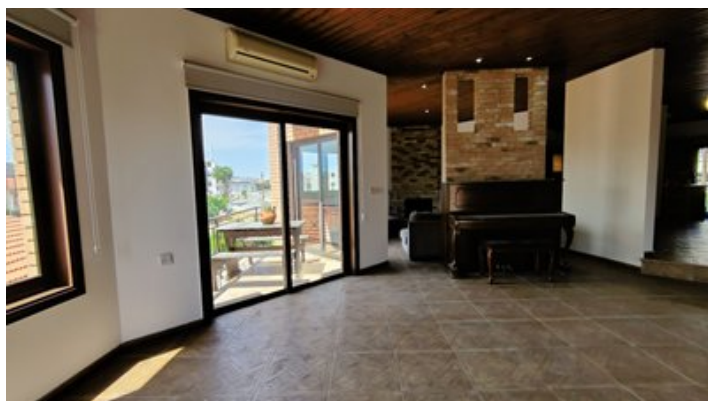
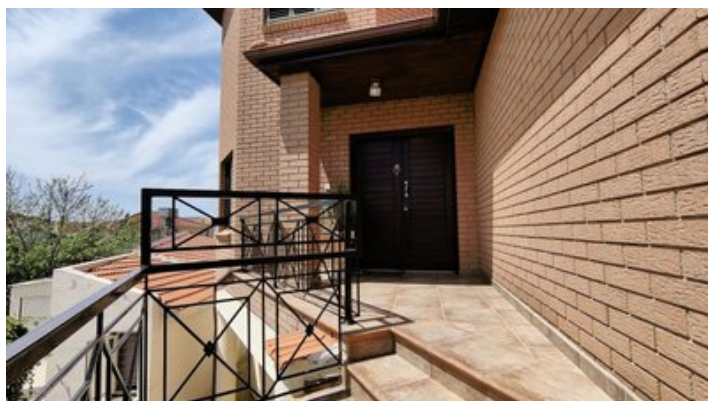


## Upper House for Sale in Lakatamia

📍 Nicosia, Lakatamia

#58192





ΠΡΟΣΟΧΗ/  
ATTENTION

Πληροφορίες όπως τιμές ακινήτων και/ή διαθεσιμότητα ακινήτων που επισυνάπτονται στην ιστοσελίδα μας δεν είναι δεσμευτικές και δίνεται να τροποποιηθούν ανά πάσα στιγμή

Information such as prices and / or availability of properties shown to our website are not binding and are given to change at any time without

<b>Price</b>	€350,000	<b>Type</b>	House
<b>Bedrooms</b>	6	<b>Bathrooms</b>	2
<b>Covered</b>	315 m <sup>2</sup>	<b>Basement</b>	90 m <sup>2</sup>
<b>Covered veranda</b>	17 m <sup>2</sup>	<b>Uncovered veranda</b>	25 m <sup>2</sup>
<b>Year of Construction</b>	2007	<b>Title deed</b>	Yes
<b>Status</b>	Resale	<b>Energy efficiency rating</b>	Certificate expected
<b>Floor</b>	1 / 2	<b>Area</b>	Nicosia, Lakatamia

## Description

Two-storey Upper House for Sale in Lakatamia.

This house located close to Tsantali restaurant and many other amenities such as supermarkets, sops, kiosks, etc.

Internal: 315 sqm

Covered verandas: 17 sqm

Uncovered verandas: 25 sqm

Basement: 90 sqm

On the first floor there is a large living room , dining room , 2 kitchens , one guest wc , 2 bedrooms , 2 verandas and a storage room.

On the second floor there are 4 bedrooms and the laundry room.

Also, there is an attic that can be used as storage room or can be converted to an extra room.

The basement was renovated and converted to a 2-bedroom apartment.

Type of housing frame: Wooden

Features:

- 4 A/c units in the living room and master bedroom
- Provision for A/c in every room
- Central heating
- 2 Storages
- Water pressure system
- Solar water heater
- Thermitron in both bathrooms
- Three phase current
- Basement
- Separate entrance

Title deed available.

## Facilities

Aircondition, Split system

Parking, Uncovered

Solar water heater

Heating, Central, Independent

Storage

---

## Features

Bath

Combined kitchen and dining area

Balcony, back

Fitted wardrobes

Shutters

Internal stairs

Suitable for work

Corner

Double glazing

Ground Floor Bedroom

Near amenities

Guestroom

Easy access to main roads

Spacious rooms

Balcony, front

Under stairs storage

Pressurized water system

Painted

Open plan

Tile flooring

Guest WC

Roller Blinds

Indoor Fireplace

Laundry room