

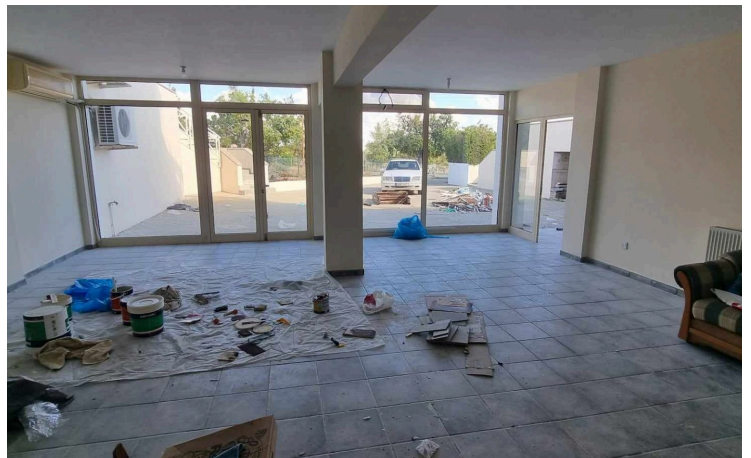
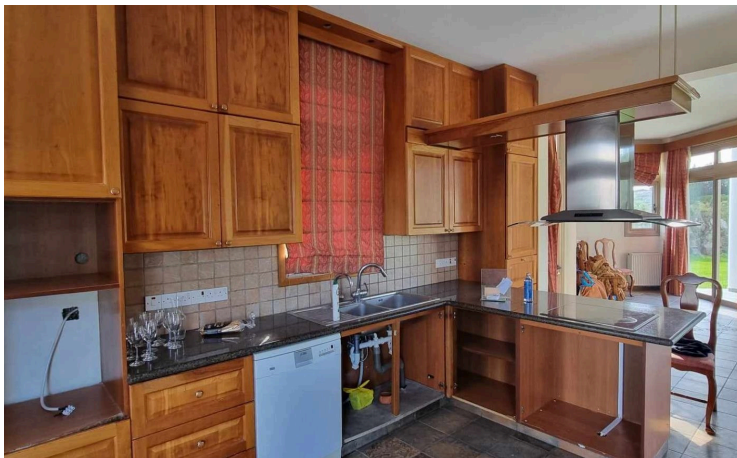
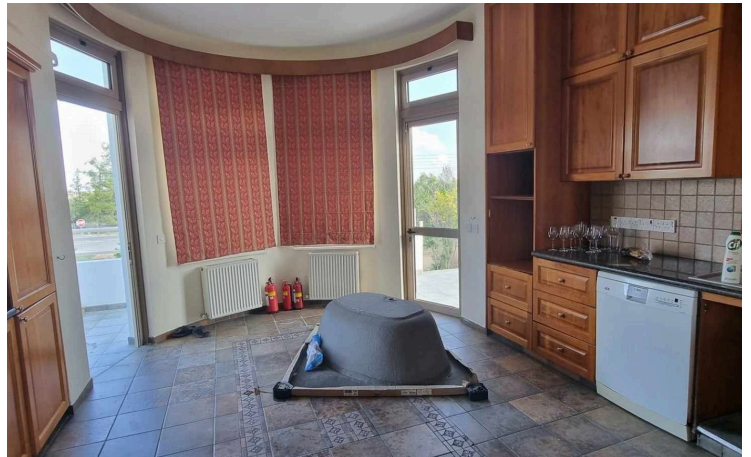
#62276

VILLA IN PENHILL FOR SALE

📍 Geri, Nicosia

€1,200,000





ΠΡΟΣΟΧΗ/ATTENTION

Πληροφορίες όπως τιμές ακινήτων και/ή διαθεσιμότητα ακινήτων που επισυνάπτονται στην ιστοσελίδα μας δεν είναι δεσμευτικές και δίνεται να

Overview

Specifications

Bedrooms




Bathrooms



Covered



Type	House
Showers	3
Toilets	4
Plot	1877 m²
Status	Resale

Year of construction	2001
Title deed	Land
Structure	Concrete
Facade	Concrete
Energy efficiency rating	 Certificate expected

Description

For sale is a spacious villa in the peaceful area of Penhill Geri. This well-maintained property, built in 2001, offers a generous internal space of 194 square meters, featuring four comfortable bedrooms and four modern bathrooms. The house has a ground floor and a basement, providing plenty of room for families or those who love entertaining.

Set on a large plot 1877m², this home boasts stunning panoramic views of the Athalassa forest, and surrounding countryside, creating a serene atmosphere perfect for relaxation. The location offers easy access to the highway, making it convenient for commuting and exploring nearby attractions.

Penhill is a must and precious area, known for its beautiful landscapes and friendly community, offering a mix of tranquility and modern living. The area is close to various amenities, including shops, schools, and parks, ensuring everything you need is within reach.

Don't miss out on this opportunity to own a beautiful home in a great neighborhood. Contact MPA Property for more information or to schedule a viewing. Discover the charm and comfort that awaits you in Geri.



ΠΡΟΣΟΧΗ/ATTENTION

Πληροφορίες όπως τιμές ακινήτων και/ή διαθεσιμότητα ακινήτων που επισυνάπτονται στην ιστοσελίδα μας δεν είναι δεσμευτικές και δίνεται να

Additional information

Facilities

Aircondition, Split system

Parking, Underground

Storage

Heating, Central

Pergola

Landscaped garden

Solar water heater

Features

Alarm system

Cul de sac

Easy access to main roads

Garden, large

Internal stairs

Laundry room

Painted

Play room

Separate dining area

Spacious rooms

Bath

Double glazing

En suite shower

Granite countertops

Kitchen island

Luxury specifications

Panoramic view

Pressurized water system

Shower

Country view

Easy access to highway

Entrance gate

Guest WC

Kitchenette

Next to green area

Parquet flooring

Quiet area

Shutters

Distances

Amenities



600 m



ΠΡΟΣΟΧΗ/ATTENTION

Πληροφορίες όπως τιμές ακινήτων και/ή διαθεσιμότητα ακινήτων που επισυνάπτονται στην ιστοσελίδα μας δεν είναι δεσμευτικές και δίνεται να