

#64853

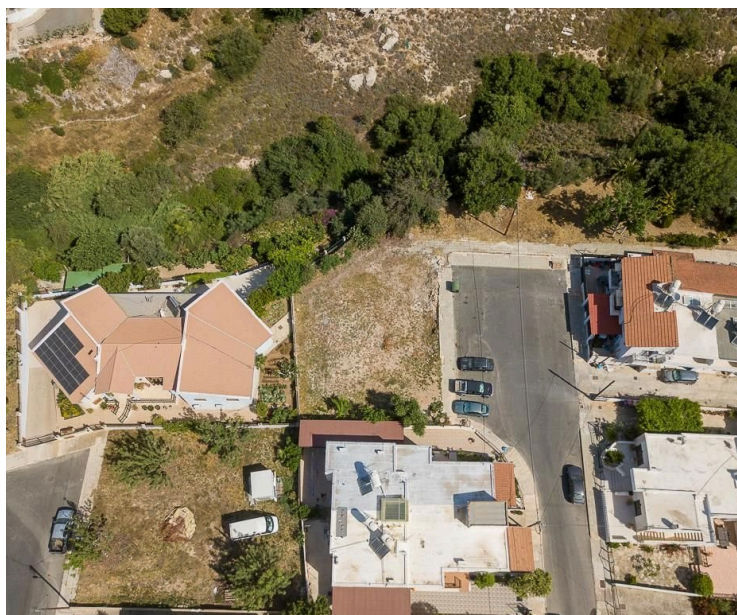
# Plot - Anavargos, Paphos

 Anavargos, Paphos

**€150,000** +VAT







ΠΡΟΣΟΧΗ/ATTENTION

Πληροφορίες όπως τιμές ακινήτων και/ή διαθεσιμότητα ακινήτων που επισυνάπτονται στην ιστοσελίδα μας δεν είναι δεσμευτικές και δίνεται να



# Overview

## Specifications

Area

 **438 m<sup>2</sup>**

Type

**Building Plot**

Title deed

**Yes**

## Description

438 m2 Residential plot in a quiet and attractive location in Anavargos Quarter in Paphos Municipality, at a close distance from Paphos General Hospital and “International School of Paphos”.

The property is situated close to numerous amenities and services, including schools, parks, and supermarkets. Additionally, it offers excellent access to the Paphos town centre and the motorway.

The plot has a regular shape and a light, inclined surface. It abuts onto a public road (cal de suc) along its eastern boundary with a frontage of 25 meters (approx.), as well as it abuts to a pedestrian road along its northern boundary.

It is considered an ideal choice for a land developer or an individual.

It lies within the residential Town Planning Zone Ka5, which allows for the development of a three-storey building, having a building density coefficient of 100%. It is also suitable for a residential development.

Area: 438 m2

Zone: Ka5

Building coefficient: 100 %

Coverage: 50%

Floors: 3

Height: 11,30 m



ΠΡΟΣΟΧΗ/ATTENTION

Πληροφορίες όπως τιμές ακινήτων και/ή διαθεσιμότητα ακινήτων που επισυνάπτονται στην ιστοσελίδα μας δεν είναι δεσμευτικές και δίνεται να

# | Additional information

## Features

Easy access to highway

Easy access to main roads

Near amenities



ΠΡΟΣΟΧΗ/ATTENTION

Πληροφορίες όπως τιμές ακινήτων και/ή διαθεσιμότητα ακινήτων που επισυνάπτονται στην ιστοσελίδα μας δεν είναι δεσμευτικές και δίνεται να