


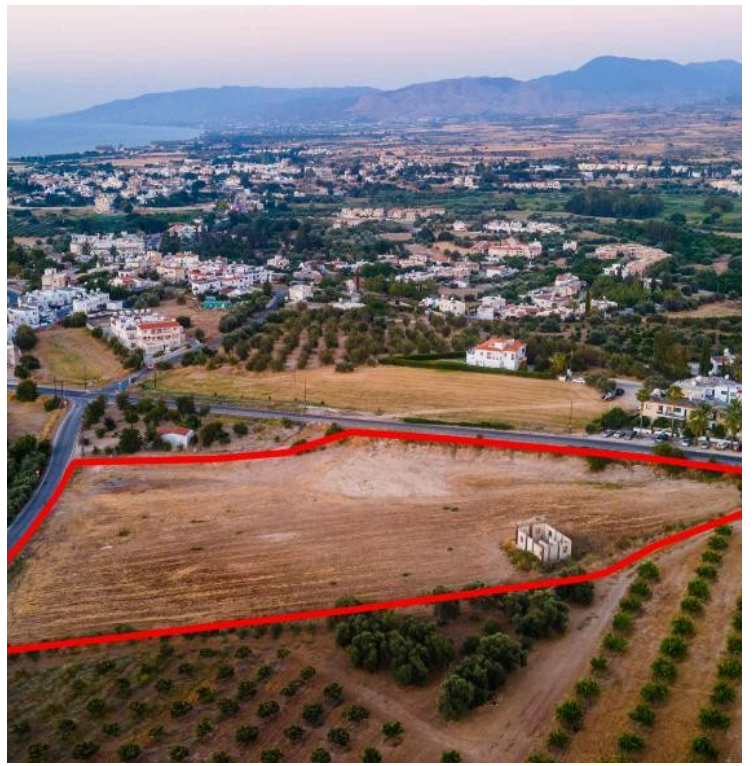
#66241

# Residential Development Field in Polis Chrysochous

 Polis, Paphos

**€700,000** +VAT





ΠΡΟΣΟΧΗ/ATTENTION

Πληροφορίες όπως τιμές ακινήτων και/ή διαθεσιμότητα ακινήτων που επισυνάπτονται στην ιστοσελίδα μας δεν είναι δεσμευτικές και δίνεται να

# Overview

## Specifications

Area

 13676 m<sup>2</sup>

Type

Field

## Description

This 13,676sqm field is located in Polis Chrysochous, just 500m from the town centre and 1.5km from the Polis Harbour and beachfront.

Positioned in one of Paphos district's most desirable coastal communities, the property offers excellent potential for the development of a residential complex.

The field benefits from a total road frontage of 272m, ensuring easy access and visibility. It enjoys proximity to essential amenities—including shops, restaurants, schools and services—while offering quick access to the area's coastal promenade and marina.

### Key Features

Land area: 13,676sqm

Road frontage: 272m

Ideal for residential development

Close to Polis centre & harbour

This property presents a rare opportunity to acquire a large field suitable for high-end residential development in one of Cyprus' most attractive coastal towns, combining scenic surroundings, accessibility, and development potential.



ΠΡΟΣΟΧΗ/ATTENTION

Πληροφορίες όπως τιμές ακινήτων και/ή διαθεσιμότητα ακινήτων που επισυνάπτονται στην ιστοσελίδα μας δεν είναι δεσμευτικές και δίνεται να

# Additional information

## Features

Connected to electric mains

Easy access to highway

Easy access to main roads

## Planning zones

Zone	Cover factor	Build factor	Max height	Max floors	Affected percentage
Ka9	25%	40%	10 m	2	90%
Δα2	1%	1%	5 m	1	10%



ΠΡΟΣΟΧΗ/ATTENTION

Πληροφορίες όπως τιμές ακινήτων και/ή διαθεσιμότητα ακινήτων που επισυνάπτονται στην ιστοσελίδα μας δεν είναι δεσμευτικές και δίνεται να