

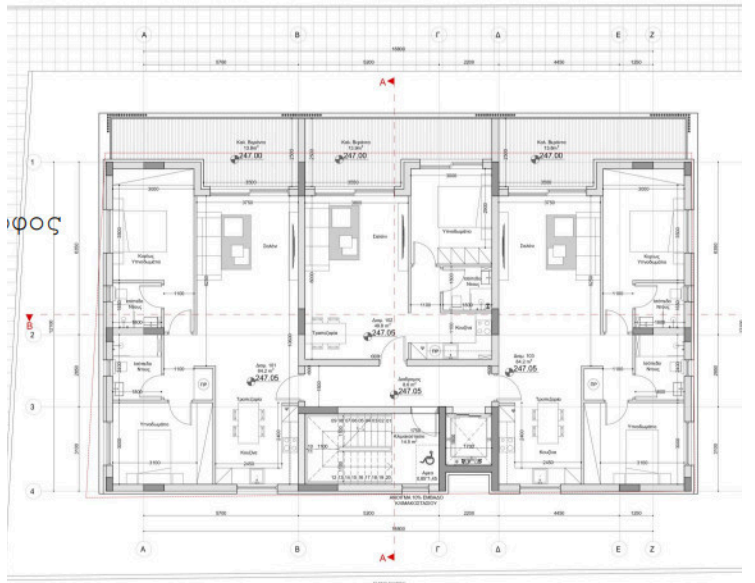
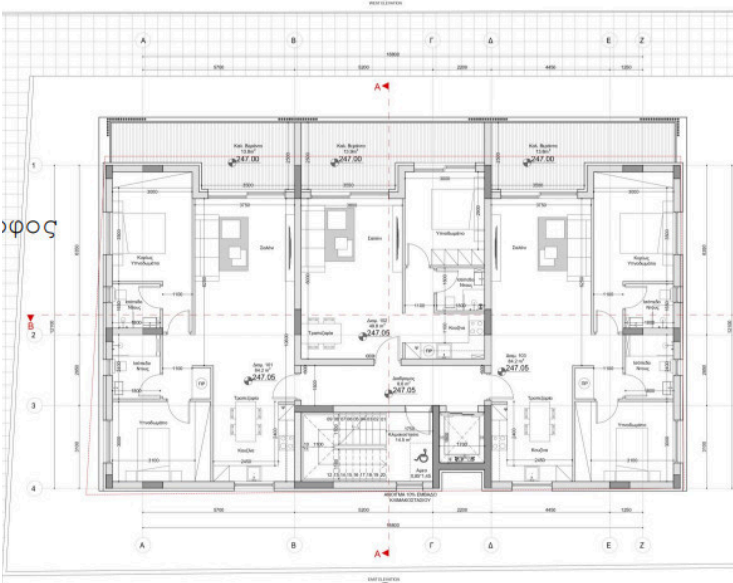
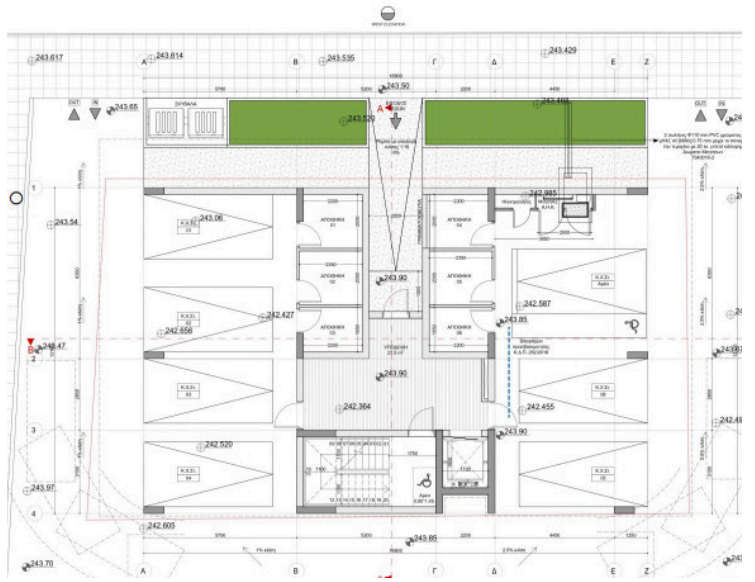
#68464

Two-Bedroom Apartment in Kalithea For SALE

 Kalithea, Nicosia

€187,000 +VAT





ΠΡΟΣΟΧΗ/ATTENTION

Πληροφορίες όπως τιμές ακινήτων και/ή διαθεσιμότητα ακινήτων που επισυνάπτονται στην ιστοσελίδα μας δεν είναι δεσμευτικές και δίνεται να

Overview

Specifications

Bedrooms

 2


Bathrooms

 2

Covered

 84.2 m²

Type	Apartment
Toilets	2
Covered veranda	13.8 m²
Status	Under construction

Year of construction	2026
Structure	Concrete
Facade	Concrete
Energy efficiency rating	 A+

Description

The project is located next to Diamanti Playground, Kalithea.

It is within proximity to a school, banks, bakeries, and shops, with easy access to the city center and the Nicosia–Limassol motorway.

The project consists of 4 two-bedroom apartments and 2 one-bedroom apartments
Featuring modern design and high construction standards.

Each apartment includes a private parking space and a storage room, as well as large covered verandas.

The building is equipped with an elevator for easy access and convenience.

Features & specifications:

- Thermal insulation of aluminum window frames
- Granite kitchen countertops
- Choice of ceramic tiles by the buyer
- Choice of sanitary ware by the buyer
- Building energy efficiency class A+

There will be a photovoltaic system in each apartment, as well as in the common area of the block. Also, air



ΠΡΟΣΟΧΗ/ATTENTION

Πληροφορίες όπως τιμές ακινήτων και/ή διαθεσιμότητα ακινήτων που επισυνάπτονται στην ιστοσελίδα μας δεν είναι δεσμευτικές και δίνεται να

Additional information

Facilities

Aircondition, Split system

Heating, Central, independent

Parking, Covered

Solar photovoltaic panels

Storage

Features

Double glazing

Easy access to highway

Easy access to main roads

Elevated

Kitchen appliances

Near amenities

Open plan

Veranda



ΠΡΟΣΟΧΗ/ATTENTION

Πληροφορίες όπως τιμές ακινήτων και/ή διαθεσιμότητα ακινήτων που επισυνάπτονται στην ιστοσελίδα μας δεν είναι δεσμευτικές και δίνεται να